

ELECTRIC QUARTER-TURN ACTUATOR



YMQ-Series

YMQ-Series is a product designed & manufactured for 90° rotating operation & automation of a rotating device. It is to maintain the optimized operation status with Self-Locking for rotation prevention by reverse torque from the valve, automatic-manual conversion device, overload & overcurrent protector, space heater for condensation & congelation prevention, etc.

Application

Divided as YMQ-05P(A), 10P(A), 20P(A), 40P(A), 60P(A), 100P(A), 150P(A) models, the series provides multiple torques within 6kg/m~250kg/m which is suitable for Butterfly valve within 50A~600A and Ball valves within 50A~500A, and also applicable into 90° rotating devices such as DAMPER, etc.

Technical Data

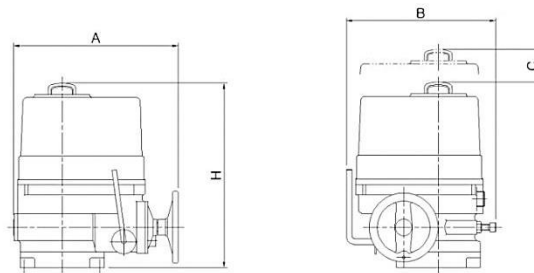
Valves							
Model	MAX Out Put Torque	Operating Time	M C F	Rated Current (mA)		Number Of Hand Wheel Turns	Weight (Kgf/cm2)
	Kg/m			60/50	w		
					220V	380V	
YMQ-05	6	14/17	15	450	130	8.5	11
YMQ-10	9	14/17	25	580	170	8.5	11
YMQ-20	19	17/20	40	950	300	10	13
YMQ-40	38	20/24	60	1300	360	12.5	17
YMQ-60	60	24/29	90	1500	560	14.5	18
YMQ-100	100	24/29	180	2150	840	14.5	22
YMQ-150	150	72/87	90	1500	560	43.5	68

ELECTRIC QUARTER-TURN ACTUATOR

Technical Data

- Enclosure : Watertight Ingress Protection 67 Nema 4 and 6
- Ambient Temperature : -20°C to +70°C, 150 °C /1hr
- Power Supply(60/50Hz) : 110/220 V AC, 1Phase / 380/440 V AC, 3Phase
- Control Power : 110/220 V AC, 1Phase, 60 / 50Hz
- Torque Switches : 2 Open / Close (Except NA 06, NA 09)
- Limit Switches : 2 Open / Close, 250 V AC 16A Rating
- Stall Protection : Built – in Thermal Protection (Open 150°C±5°C/Close 97°C±15°C)
- Travel Angle : 90°±5°
- Indicator : Continuous Position Indicator
- Manual Override : Hand / Auto Declutching Mechanism
- Self Locking : Provided by means of Worm Gearing
- Mechanical Stops : External Adjustable Screws
- Space Heater : 20W (110/220V AC, 24V DC)
- Conduit Entries : Two PF ¾" (NPT ¾")
- Lubrication : Grease Molly (EP Type)
- Materials : Steel, Aluminum Alloy, All Bronze
- Surface Treatment : Anodizing
- External Coating : Dry Powder, Epoxy – Polyester, Polyester (TGIC-Free)

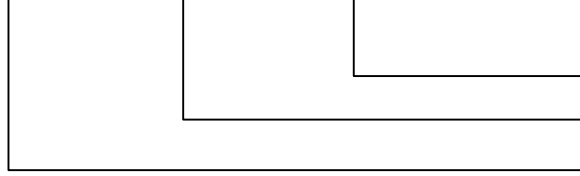
Shape Dimension



Category	YMQ-05	YMQ-10	YMQ-20	YMQ-40	YMQ-60	YMQ-100	YMQ-150
A	168	231	260	285	325	325	388
B	132	181	224	258	307	307	307
C	108	108	108	130	130	178	178
H	148	273	273	320	361	361	502

Order specifications

Y M Q - □ □ □ P(A)



P: Proportional / A : ON-OFF

Model Number : 05 ~150

Motor Quarter-turn Actuator